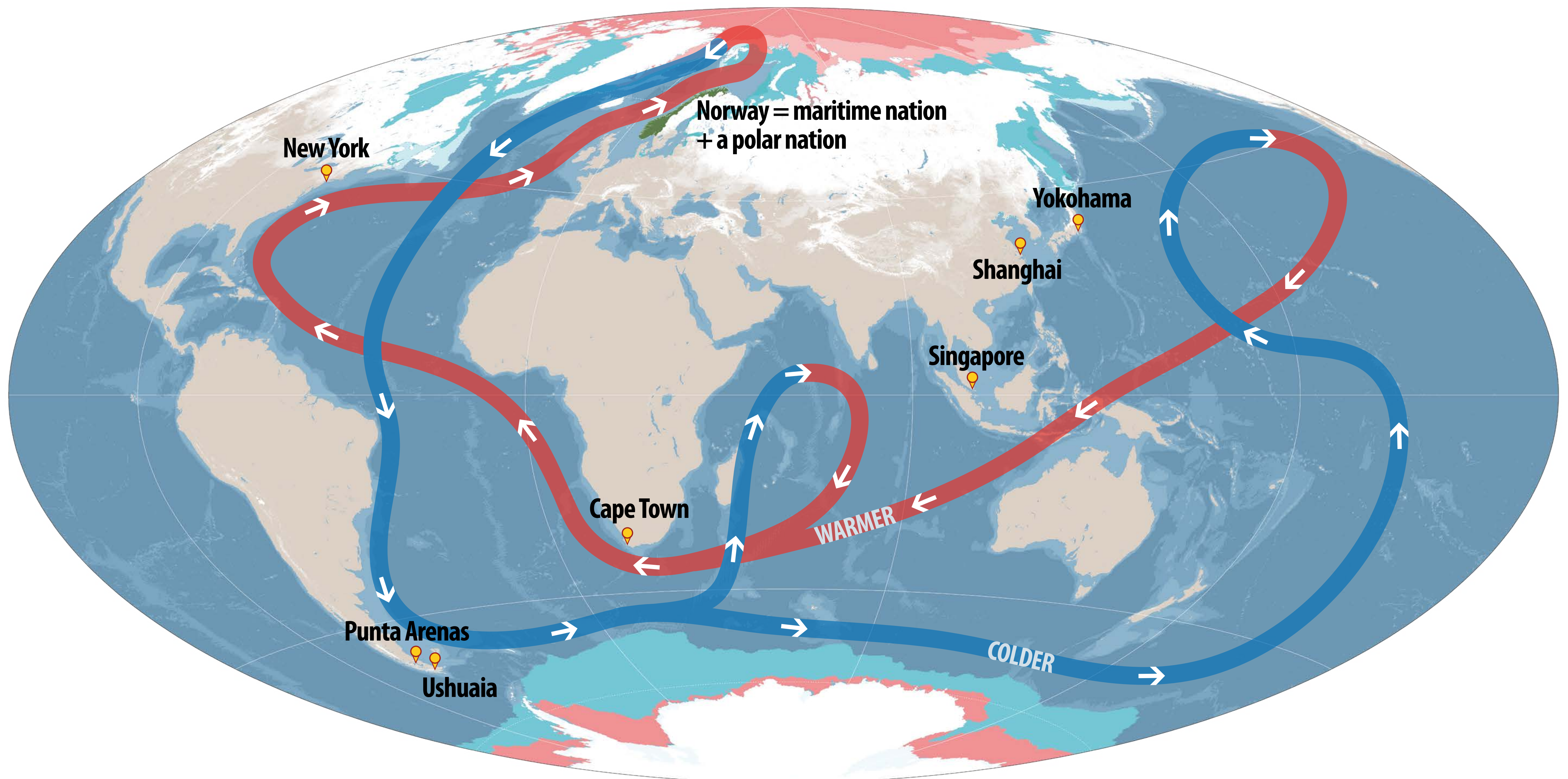


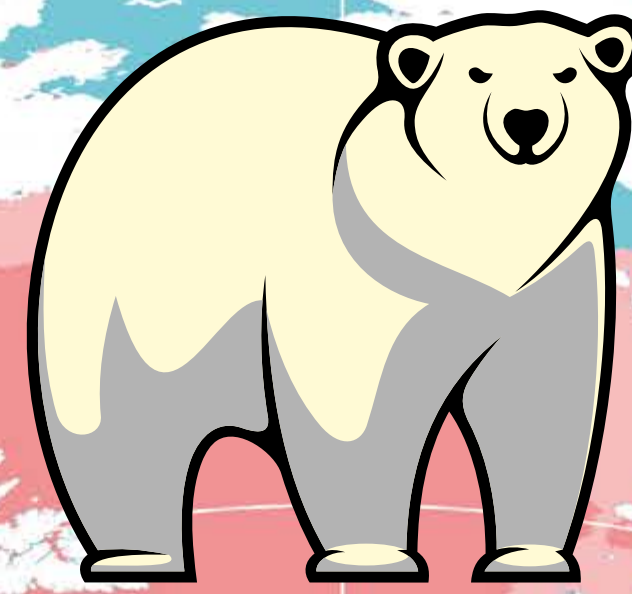
As climate change diminishes the ice around the poles,
the World Ocean carries the negative impacts all over the Earth

POLAR = GLOBAL!



The poles are important for everyone and everyone influences the poles

THE POLAR REGIONS ARE WARMING FASTEST



Yokohama

Shanghai

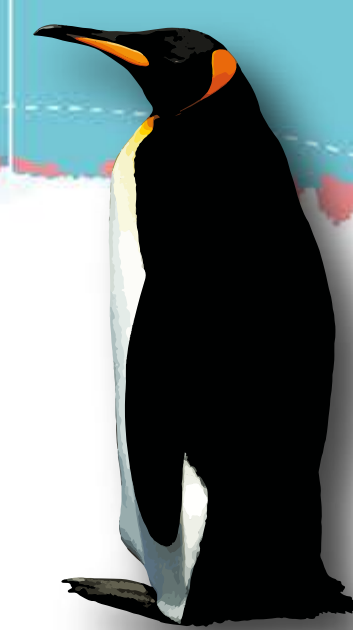
New York

Singapore

Cape Town

Punta Arenas

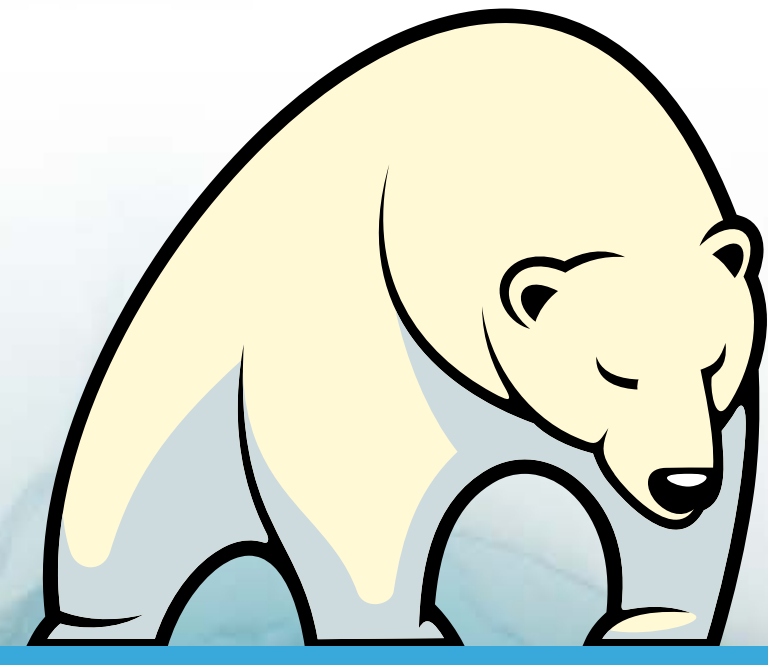
Ushuaia



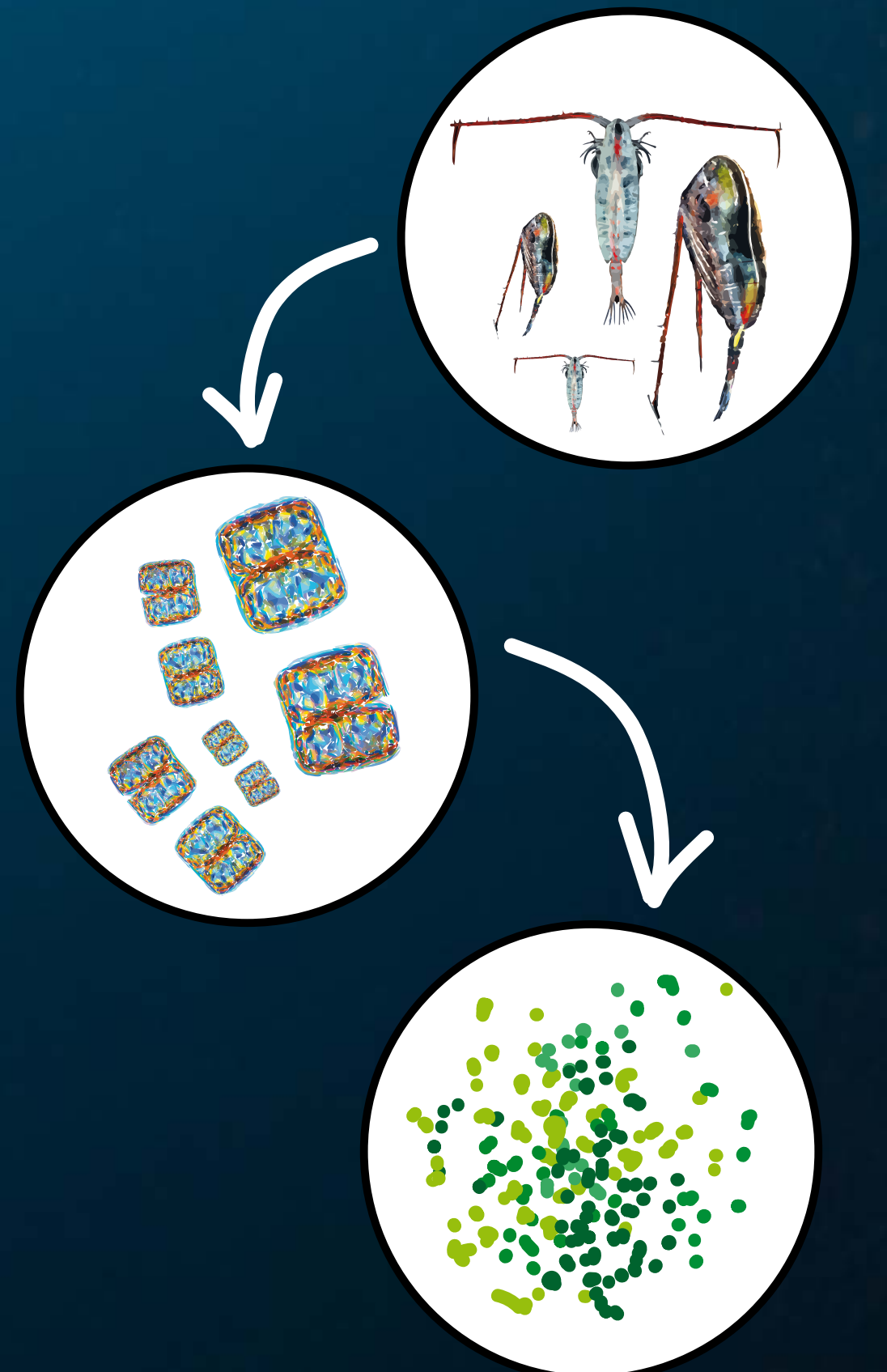
Ice and snow keep the Earth cool by reflecting the Sun's energy back into space. It's a loop: less ice and snow mean a warmer planet, which shrinks the ice even more. Warm air melts ice from above. Warm ocean currents melt ice from below. The warming climate is changing the polar regions dramatically.

SEA ICE LIFE AT RISK

The layer of ice that floats on the ocean in the Arctic and Antarctic is vital to the animals that live there.



*If you lose one
you could lose
them all*



SHRINKING GLACIERS = RISING SEA LEVEL

The world's glaciers are shrinking, especially in the Arctic. Melting glaciers and the expansion of water as it warms are raising the level of the sea worldwide.



DECREASING THE UNCERTAINTY

Scientists at the Norwegian Polar Institute and around the world work to reduce the uncertainty. The more humankind knows, and the smaller our footprint, the more secure is our future.

