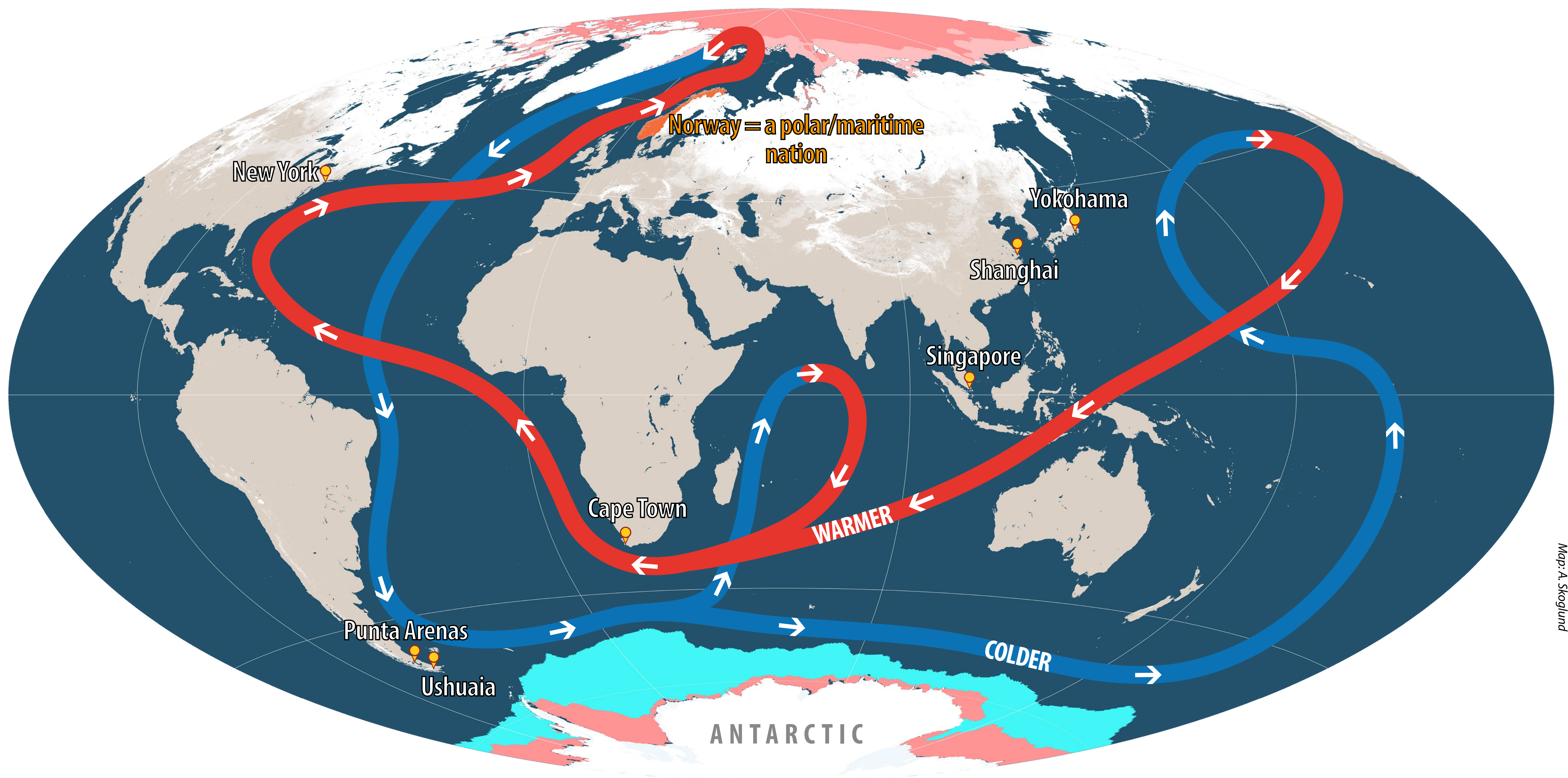




As climate change diminishes the ice around the poles,
the World Ocean carries the negative impacts all over the Earth

POLAR = GLOBAL!



The poles are important for everyone and everyone influences the poles

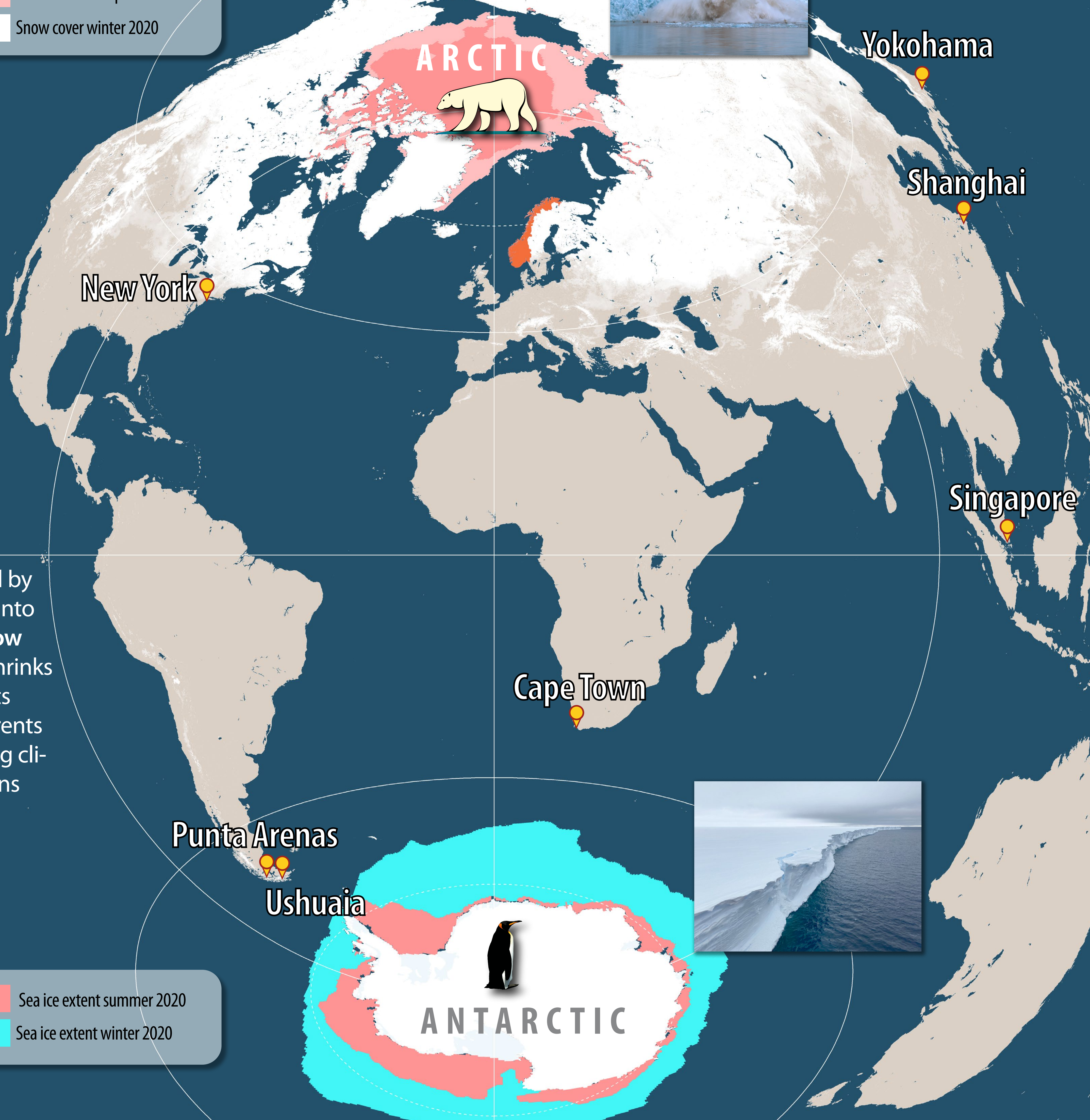
THE POLAR REGIONS ARE WARMING FASTEST



Sea ice extent September 2020

Sea ice extent September 1980

Snow cover winter 2020



Ice and snow keep the Earth cool by reflecting the Sun's energy back into space. It's a loop: **less ice and snow mean a warmer planet**, which shrinks the ice even more. Warm air melts ice from above. Warm ocean currents melt ice from below. The warming climate is changing the polar regions dramatically.



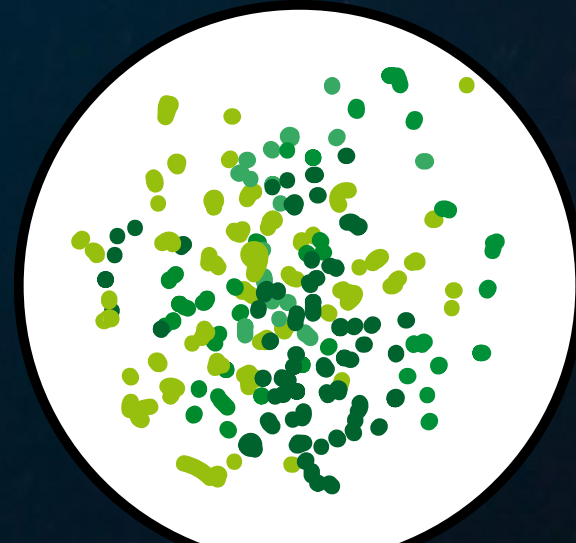
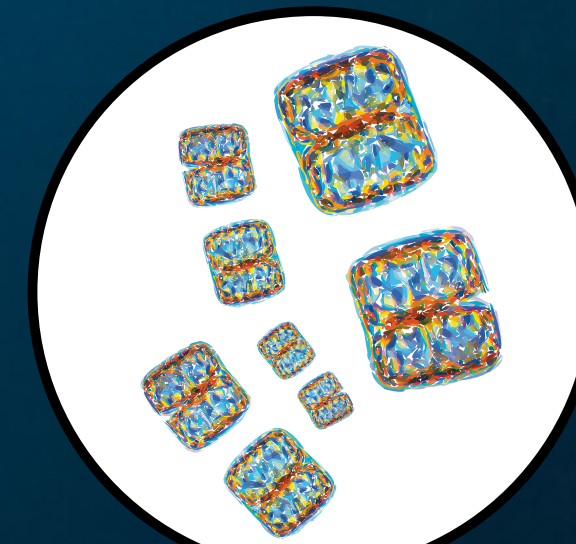
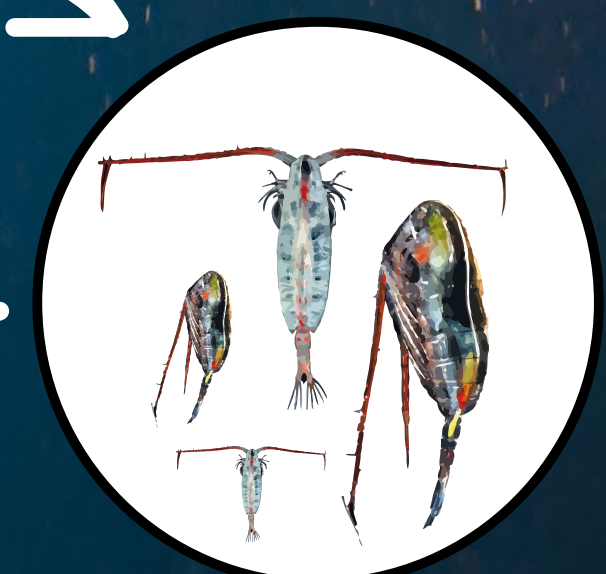
Sea ice extent summer 2020

Sea ice extent winter 2020

Photos: M. W. Hammer, J. Lauber

SEA ICE LIFE AT RISK

The layer of ice that floats on the ocean in the Arctic and Antarctic is vital to the animals that live there. Losing the polar regions as we know them would impoverish our planet.



*If we lose one
we could lose
them all*

SHRINKING GLACIERS = RISING SEA LEVEL

The world's glaciers are shrinking, especially in the Arctic. Melting glaciers and the expansion of water as it warms are raising the level of the sea worldwide.

Sea level rise is speeding up

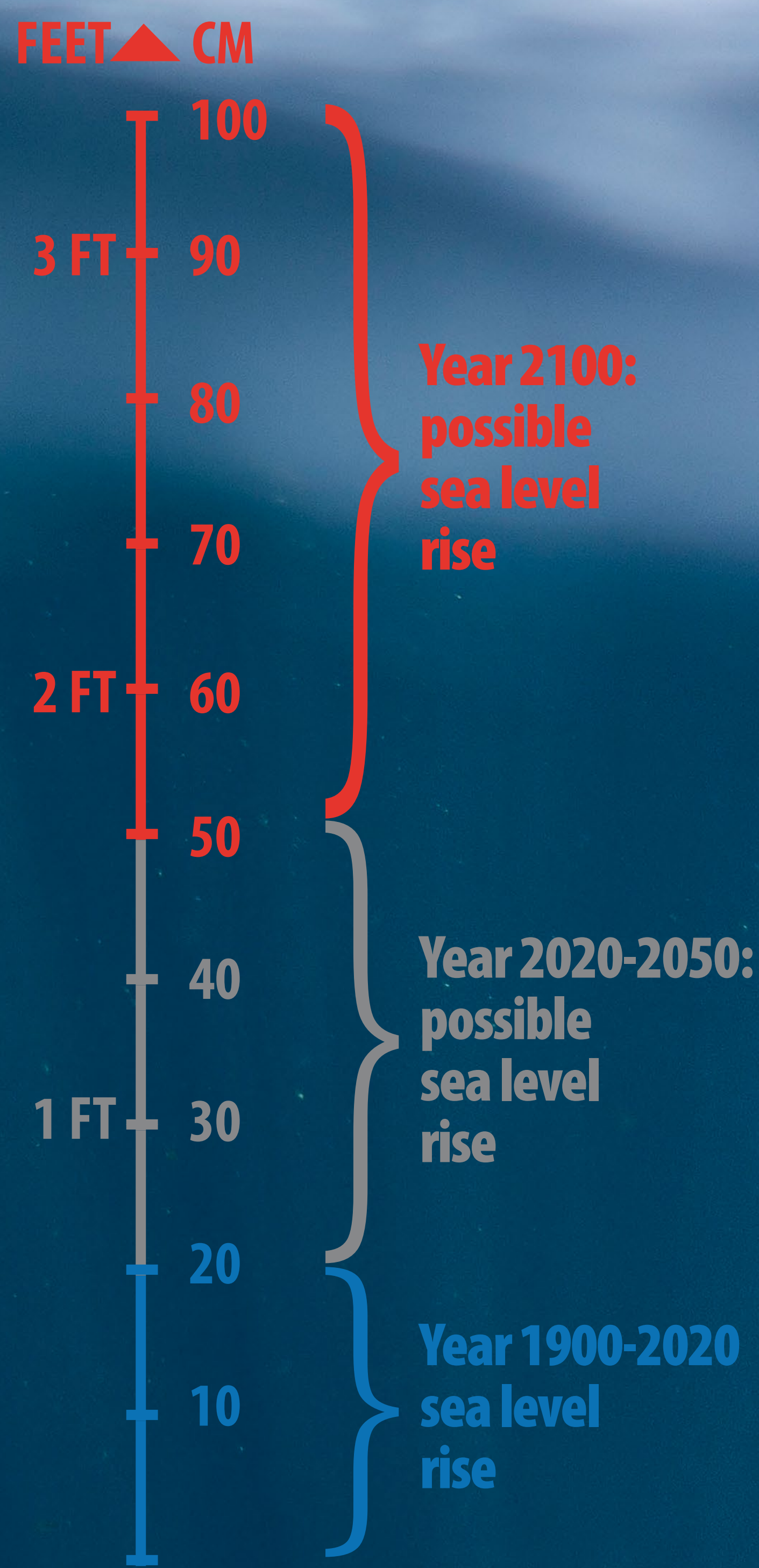


Photo: G.W. Gabrielsen

Photo: fitchgallery - mostphotos.com

DECREASING THE UNCERTAINTY

Scientists at the Norwegian Polar Institute and around the world work to reduce the uncertainty. The more humankind knows, and the smaller our footprint, the more secure is our future.



Photo: D. Divine

